

**GENERAL
CATALOGUE**



TK-2 TK-4 TK-17 Multi Jet Dry Type Water Meters

General

- Multijet principle assures a long service time
- Low head loss ● MID Certificated
- Good sensitivity in initial starting
- Available for optical reading
- Body internally/externally e/p powder painted
- Electrostatic painted body made of corrosion resistance brass
- Special glass with high resistance to pressure and impact ● Non-return valve
- 360° rotating lid ● Suitable for cold water up to 50°C ● Vacuum mechanism
- 3 years warranty ● Almost no maintenance ● Service and spare parts available for 10 years

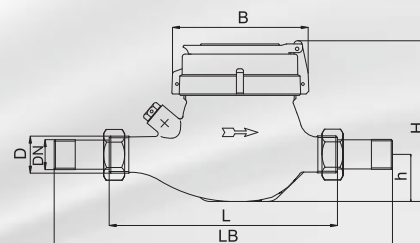


Performance Data

	75/33/AT/EC	TK-2	TK-4	TK-17
Nominal Flow	Qn (m3/h)	2.5	1.5	1.5
Maximum Flow	Qmax (m3/h)	5.0	3.0	3.0
Transitional Flow	Qt (m3/h)	0.0375	0.0225	0.12
Minimum Flow	Qmin (m3/h)	0.025	0.015	0.03
	MI-001			
Permanent Flow	Q3 (m3/h)	4.0	2.5	-
Overload Flowrate	Q4 (m3/h)	5.0	3.125	-
Transitional Flowrate	Q2 (m3/h)	0.040	0.025	-
Minimum Flowrate	Q1 (m3/h)	0.025	0.0156	-
Initial Flowrate	Qi (l/h)	6	5	8
Maximum Working Pressure	(bar)	16	16	16
Maximum Working Temperature	(°C)	50	50	50
Metrological Class (75/33/AT/EC)		C	C	B
Q3/Q1 (MI-001 OIML R49)		160	160	-
Pressure Loss (Q3)	(bar)	0.6	0.6	0.6
Maximum Registration Capacity	(m3)	99999	99999	99999
Smallest Reading Capacity	(m3)	0.00005	0.00005	0.00005
Mounting on the Network		Horizontal	Horizontal	Horizontal
Unit Weight	(kg)	1.40	1.38	1.40
Package Weight (without connections)	(kg)	14.80	14.70	14.80
Package Weight (with connections)	(kg)	17.00	17.00	17.00
Quantity per package		10	10	10
Package Dimensions	(cm)	24X46.5X21	18.5X48X24.5	18.5X48.5X24.5

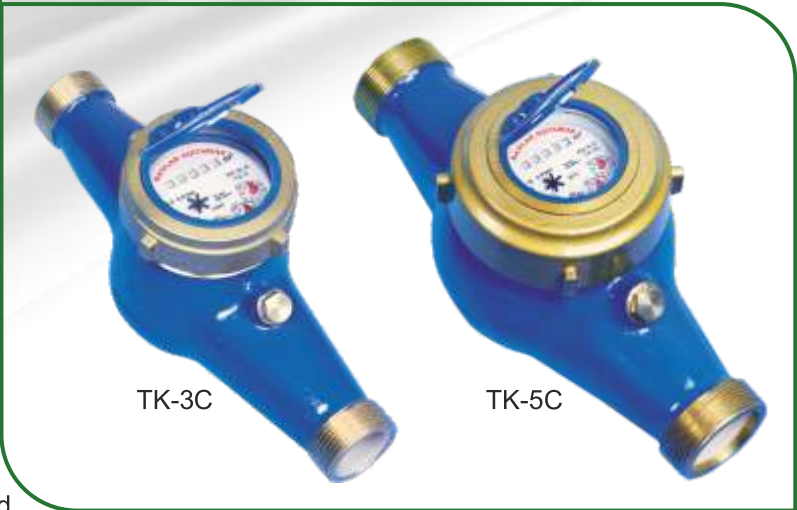
Dimensions

		TK-2	TK-4	TK-17	
Nominal diameter	DN	20	15	15	mm
Connecting diameter	D	G 1	G 3/4	G 3/4	
Total overall meter height	H	109	115	107	mm
Axis height	H	31.5	33.5	30	mm
Length	L	190	165	165	mm
Width	B	97	97	95	mm
Length with connections	LB	285	258	258	mm



TK-3C TK-5C

Multi Jet Dry Type Water Meters



General

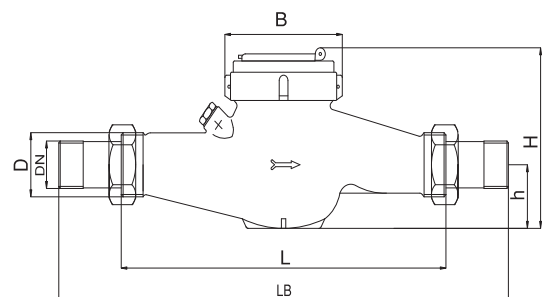
- Multijet principle assures a long service time
- Low head loss ● MID Certificated
- Good sensitivity in initial starting
- Available for optical reading
- Body internally/externally e/p powder painted
- Electrostatic painted body made of corrosion resistance brass
- Non-return valve ● Vacuum mechanism (TK-5)
- 360° rotating lid ● Suitable for cold water up to 50°C
- 3 years warranty ● Almost no maintenance ● Service and spare parts available for 10 years

Performance Data

	75/33/EC	TK-3C	TK-5C
Nominal Flow	Qn (m3/h)	3.5	10
Maximum Flow	Qmax (m3/h)	7.0	20
Transitional Flow	Qt (m3/h)	0.0525	0.15
Minimum Flow	Qmin (m3/h)	0.035	0.10
MI-001			
Permanent Flow	Q3 (m3/h)	6.3	16
Overload Flowrate	Q4 (m3/h)	7.875	20
Transitional Flowrate	Q2 (m3/h)	0.063	0.16
Minimum Flowrate	Q1 (m3/h)	0.039	0.10
Initial Flowrate	Qi (l/h)	7	15
Maximum Working Pressure	(bar)	16	16
Maximum Working Temperature	(°C)	50	50
Metrological Class (75/33/EC)		C	C
Q3/Q1 (MI-001 OIML R49)		160	160
Pressure Loss (Q3)	(bar)	0.6	0.6
Maximum Registration Capacity	(m3)	99999	99999
Smallest Reading Capacity	(m3)	0.00005	0.00005
Mounting on the Network		Horizontal	Horizontal
Unit Weight	(kg)	2.20	4.50
Package Weight (without connections)	(kg)	23.50	19.00
Package Weight (with connections)	(kg)	28.00	24.00
Quantity per package		10	4
Package Dimensions	(cm)	26X51.5X29	30X32X34

Dimensions

		TK-3C	TK-5C	
Nominal diameter	DN	25	40	mm
Connecting diameter	D	G 1 1/4	G 2	
Total overall meter height	H	120	150	mm
Axis height	H	40.5	46	mm
Length	L	260	300	mm
Width	B	97	132	mm
Length with connections	LB	375	435	mm



TK-7C

Multi Jet Dry Type Water Meter

General

- Multijet principle assures a long service time
- Low head loss ● MID Certificated
- Good sensitivity in initial starting
- Available for optical reading
- Body internally/externally e/p powder painted
- Electrostatic painted body made of GG25 ● Electrostatic painted body made of corrosion resistance brass
- 360° rotating lid ● Suitable for cold water up to 50°C
- Non-return valve ● Vacuum mechanism
- 3 years warranty ● Almost no maintenance ● Service and spare parts available for 10 years

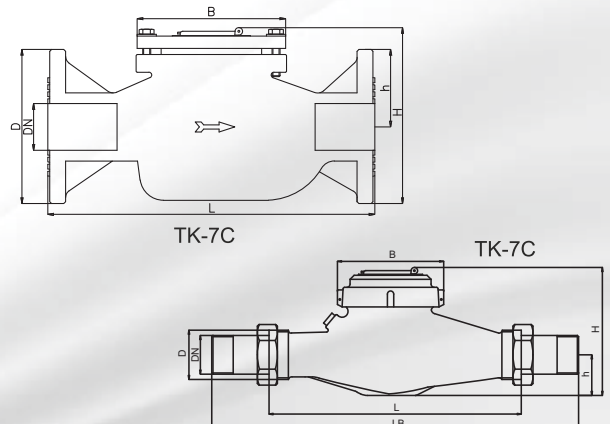


Performance Data

	MI-001	TK-7C	TK7-C
Permanent Flow	Q3 (m3/h)	25	25
Overload Flowrate	Q4 (m3/h)	31.25	31.25
Transitional Flowrate	Q2 (m3/h)	0.25	0.250
Minimum Flowrate	Q1 (m3/h)	0.156	0.15625
Initial Flowrate	Qi (l/h)	20	20
Maximum Working Pressure	(bar)	16	16
Maximum Working Temperature	(°C)	50	50
Q3/Q1 (MI-001 OIML R49)		160	160
Pressure Loss (Q3)	(bar)	0.6	0.6
Maximum Registration Capacity	(m3)	99999	99999
Smallest Reading Capacity	(m3)	0.00005	0.00005
Mounting on the Network		Horizontal	Horizontal
Unit Weight	(kg)	19.30	5.30
Package Weight (without connections)	(kg)	-	22.00
Package Weight (with connections)	(kg)	-	28.40
Quantity per package		1	4
Package Dimensions	(cm)	18.5X37.5X19.5	32X29.5X35.5

Dimensions

		TK-7C	TK-7C	
Nominal diameter	DN	50	50	mm
Connecting diameter	D	160	2 1/2	
Total overall meter height	H	186.5	150.7	mm
Axis height	H	83	50	mm
Length	L	350	300	mm
Width	B	159	95	mm
Length with connections	LB	-	435	mm



TK-23 TK-25

Multi Jet Dry Type Water Meter

General

- Multijet principle assures a long service time
- Low head loss ● MID Certificated
- Good sensitivity in initial starting
- Available for optical reading
- Body internally/externally e/p powder painted
- Electrostatic painted body made of corrosion resistant brass
- 360° rotating lid ● Suitable for cold water up to 50°C ● Vacuum mechanism
- 3 years warranty ● Non-return valve
- Almost no maintenance ● Service and spare parts available for 10 years

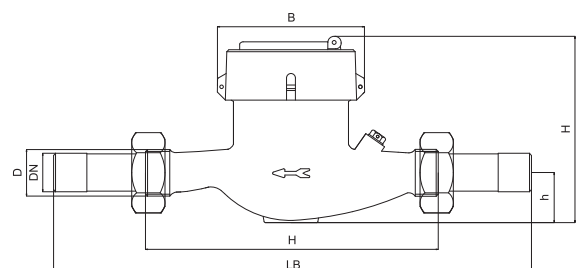


Performance Data

	75/33/AT	TK-23	TK-25
Nominal Flow	Qn (m3/h)	1.5	-
Maximum Flow	Qmax (m3/h)	3.0	-
Transitional Flow	Qt (m3/h)	0.0225	-
Minimum Flow	Qmin (m3/h)	0.015	-
MI-001			
Permanent Flow	Q3 (m3/h)	2.5	2.5
Overload Flowrate	Q4 (m3/h)	3.125	3.125
Transitional Flowrate	Q2 (m3/h)	0.025	0.04
Minimum Flowrate	Q1 (m3/h)	0.0156	0.025
Initial Flowrate	Qi (l/h)	5	7
Maximum Working Pressure	(bar)	16	16
Maximum Working Temperature	(°C)	50	50
Metrological Class (75/33/AT)		C	-
Q3/Q1 (MI-001 OIML R49)		160	100
Pressure Loss (Q3)	(bar)	0.6	0.6
Maximum Registration Capacity	(m3)	99999	99999
Smallest Reading Capacity	(m3)	0.00005	0.00005
Mounting on the Network		Horizontal	Horizontal
Unit Weight	(kg)	1.13	1.40
Package Weight (without connections)	(kg)	11.85	15.0
Package Weight (with connections)	(kg)	13.7	17.30
Quantity per package		10	10
Package Dimensions	(cm)	18.5X48.5X24.5	24X46.5X21

Dimensions

		TK-23	TK-25	
Nominal diameter	DN	15	20	mm
Connecting diameter	D	G 3/4	G 1	
Total overall meter height	H	107	113	mm
Axis height	h	30	37	mm
Length	L	165	190	mm
Width	B	95	97	mm
Length with connections	LB	258	258	mm



TK-2P TK-4P

MultiJet Wet Type Water Meters

General

- Multijet principle assures a long service time
- MID Certificated ● Low head loss
- Good sensitivity in initial starting
- Available for optical reading
- Suitable for cold water up to 50°C
- Plastic body with high resistance to pressure and impact
- 360°C rotating lid ● Non-return valve ● Vacuum mechanism
- 3 years warranty ● Almost no maintenance ● Service and spare parts available for 10 years

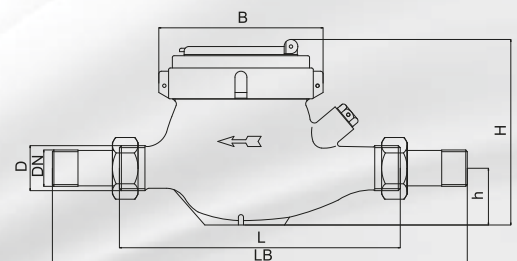


Performance Data

	75/33/AT	TK-2P	TK-4P
Nominal Flow	Qn (m3/h)	1.5	1.5
Maximum Flow	Qmax (m3/h)	5.0	3.0
Transitional Flow	Qt (m3/h)	0.0375	0.0225
Minimum Flow	Qmin (m3/h)	0.025	0.015
MI-001			
Permanent Flow	Q3 (m3/h)	4	2.5
Overload Flowrate	Q4 (m3/h)	5	3.125
Transitional Flowrate	Q2 (m3/h)	0.04	0.025
Minimum Flowrate	Q1 (m3/h)	0.025	0.0156
Initial Flowrate	Qi (l/h)	6	5
Maximum Working Pressure	(bar)	16	16
Maximum Working Temperature	(°C)	50	50
Metrological Class (75/33/AT)		C	C
Q3/Q1 (MI-001 OIML R49)		160	160
Pressure Loss (Q3)	(bar)	0.6	0.6
Maximum Registration Capacity	(m3)	99999	99999
Smallest Reading Capacity	(m3)	0.00005	0.00005
Mounting on the Network		Horizontal	Horizontal
Unit Weight	(kg)	0.64	0.59
Package Weight (without connections)	(kg)	8.68	6.89
Package Weight (with connections)	(kg)	9.72	8.58
Quantity per package		10	10
Package Dimensions	(cm)	26.5X52X22.5	18.5X48X24.5

Dimensions

		TK-2P	TK-4P	
Nominal diameter	DN	20	15	mm
Connecting diameter	D	G 1	G 3/4	
Total overall meter height	H	109	115	mm
Axis height	h	31.5	33.5	mm
Length	L	190	165	mm
Width	B	97	97	mm
Length with connections	LB	258	258	mm



VK-3 VK-4

Volumetric Water Meters

General

- Volumetric principle assures very high sensitivity even at low flow
- Very good sensitivity in initial starting
- Available for optical reading and remote (AMR) reading
- Body internally/externally e/p powder painted
- Electrostatic painted body made of corrosion resistant brass
- Special glass with high resistance to pressure and impact
- 360° rotating lid ● Suitable for cold water up to 50°C ● Non-return valve
- 3 years warranty ● Almost no maintenance ● Service and spare parts available for 10 years

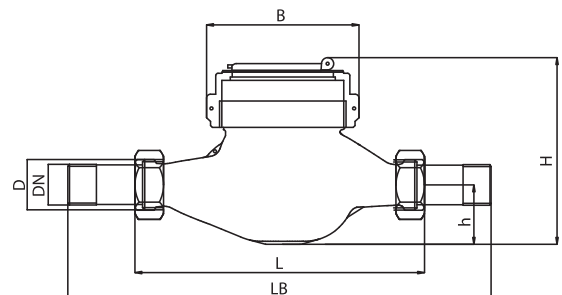


Performance Data

	75/33/AT	VK-3	VK-4
Nominal Flow	Qn (m3/h)	1.5	1.5
Maximum Flow	Qmax (m3/h)	3.0	3.0
Transitional Flow	Qt (m3/h)	0.01725	0.01725
Minimum Flow	Qmin (m3/h)	0.01125	0.01125
	MI-001		
Permanent Flow	Q3 (m3/h)	2.5	2.5
Overload Flowrate	Q4 (m3/h)	3.125	3.125
Transitional Flowrate	Q2 (m3/h)	0.020	0.020
Minimum Flowrate	Q1 (m3/h)	0.0125	0.0125
Initial Flowrate	Qi (l/h)	2	2
Maximum Working Pressure	(bar)	16	16
Maximum Working Temperature	(°C)	50	50
Metrological Class (75/33/AT)		D	D
Q3/Q1 (MI-001 OIML R49)		200	200
Pressure Loss	(bar)	0.6	0.6
Maximum Registration Capacity	(m3)	99999	99999
Smallest Reading Capacity	(m3)	0.00005	0.00005
Mounting on the Network		Horizontal and Vertical	Horizontal and Vertical
Unit Weight	(kg)	1.56	1.42
Package Weight (without connections)	(kg)	17.59	14.6
Package Weight (with connections)	(kg)	13.7	16.1
Quantity per package		10	10
Package Dimensions	(cm)	24X46.5X21	24X46.5X19

Dimensions

		VK-3	VK-4	
Nominal diameter	DN	20	15	mm
Connecting diameter	D	G 1	G 3/4	
Total overall meter height	H	109	123	mm
Axis height	h	31.5	38	mm
Length	L	190	165	mm
Width	B	97	95	mm
Length with connections	LB	258	258	mm



AK-311

Remote Reading and Prepaid Water Meters

General

- MID Certificated
- Radio Frequency automatic remote reading
- Reading through the center of the GPRS system, the collector of conformity
- Elimination of meter reading process
- Complete management of the water consumption
- No meter dismantling because of the debts
- Contactless card usage ensures isolation against external affects
- IP65 protected electronic circuit and mechanical meter
- Check valve disabling bi-directional water flow
- Sleeve security check and electronic sensor
- Lithium battery replaced by local administration
- LCD display with back light
- Suitable for water up to 50°C
- Almost no maintenance
- All spare parts available, wide range of service network
- Leakage control system, 3 years of warranty



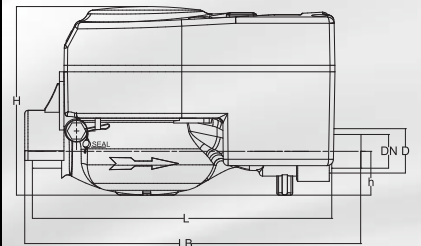
AK-311

Performance Data

			AK-311
Permanent Flowrate	Q3	(m3/h)	2.5
Overload Flowrate	Q4	(m3/h)	3.125
Transitional Flowrate	Q2	(m3/h)	0.025
Minimum Flowrate	Q1	(m3/h)	0.0156
Initial Flowrate	Qi	(l/h)	7
Maximum Working Pressure		(bar)	16
Maximum Working Temperature		(°C)	50
Q3/Q1 (MI-001 OIML R49)			160
Pressure Loss		(bar)	0.6
Maximum Registration Capacity		(m3)	99999
Smallest Reading Capacity		(m3)	0.00005
Mounting on the Network			Horizontal
Quantity per package			1
Package Dimensions		(cm)	21X11X15

Dimensions

		AK-311			
Nominal diameter	DN	15	15	20	mm
Connecting diameter	D	G 3/4	G 3/4	G 1	
Total overall meter height	H	116	116	116	mm
Axis height	h	26	26	26	mm
Length	L	165	190	190	mm
Width	B	99.7	99.7	99.7	mm
Length with connections	LB	265	285	290	mm
LCD Screen length		64x20	64x20	64x20	mm
LCD Screen angle		30°	30°	30°	mm
Unit weight		1.71	1.78	1.78	kg
Package weight (without connections)		1.83	1.90	1.90	kg
Package weight (with connections)		1.98	2.04	2.10	kg



Automatic Meter Reading Module (AMR) UM-1

General

- Automatic meter reading with RF (Radio Frequency)
- Works in AT approved 868 Mhz ISM/SRD frequency
- Automatic meter reading, no need to enter the house
- Detects illegal interventions and records
- With inductive sensor full protection against magnetic
- Electronic flow detection
- To get past data with optical interface
- Real time clock (IEC 61038 approved)
- Easy assembly
- Internal battery
- 10 years battery life
- By creating databases, you can easily control consumption values
- To secure water authority from any risk while cutting customers water
- Almost no maintenance
- 3 years of warranty
- 10 years of spare parts and service



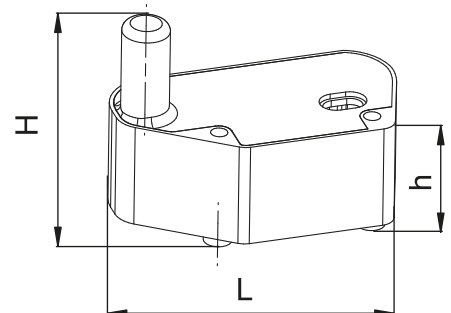
Performance Data

	UM-1
Working Frequency	868.03 Mhz
Modulation	GFSK
Transmitter output power	+10dB
Communication Speed	1.2-250 kbps
Communication Type	two way (receiever-transmitter)
Effective Distance (outside)	400m
Energy	3V DC lithium battery
Battery Life	10 years
Working Temperature	-20 / +70° C
Weight	65 Gr.
Protection Class	IP68
Suitable Baylan AquaMas models	TK-2, TK-3, TK-4, TK-5, TK-7, TK-17, TK-23, TK-2P, TK-4P, W-0-1-2-3-4-5-6



Dimensions

		UM-1	
Total height	H	55	mm
Axis height	h	26	mm
Lenght	L	76	mm



Radio Frequency Automatic Vane Open-Close Module UV-1

General

- With RF (Radio Frequency) you can automatically open and close the vane
- Works in AT approved 868 Mhz ISM/SRD frequency
- Automatic meter reading, no need to enter the house
- Real time clock (IEC 61038 approved)
- Easy installation and operation
- To secure water authority from any risk while cutting customers water
- Save time ● Internal battery ● 10 years battery life
- Almost no maintenance ● 3 years of warranty
- 10 years of spare parts and service



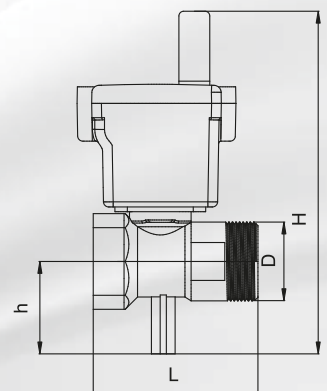
Performance Data

	UM-1
Working Frequency	868.03 Mhz
Modulation	GFSK
Receiver Sensitivity	-111 dB
Communication Speed	1.2-250 kbps
Communication Type	one way (receiver)
Effective Distance (outside)	400m
Energy	3V DC lithium battery
Battery Life	10 years
Working Temperature	-20 / +70° C
Weight	460 Gr.



Dimensions

		UV-1	
Nominal diameter	DN	20	Mm
Connecting diameter	D	G1 B	
Total height	H	113	mm
Axis height	h	30	mm
Length	L	70	mm



WOLTMAN Type Water Meters W-0-1-2-3-4-5-6



General

- MID Certificated
- Woltman type design for industrial applications
- IP 68 protected dry type mechanism
- Body internally/externally e/p powder painted
- Good sensitivity in initial starting ● Low head loss
- Optical reading available ● Special thick glass with resistance to impacts
- 3 years of warranty ● Almost no maintenance
- Service and spare parts available for 10 years

Main Technical Data

At low flows : $\pm 5\%$ (error) between minimum flow rate (Q1) and transitional flow rate (Q2)

At high flows: $\pm 2\%$ (error) between transitional flow rate (Q2) and overload flow rate (Q4)

Max. Working Temperature: 50°C

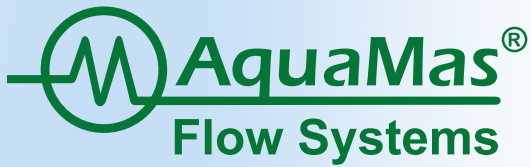
Max. Working Pressure : 16 bar

Performance Data

METER SIZE DIA (mm)	TYPE	Q3/Q1	Q4	Q3	Q2	Q1	SMALLEST READING RESOLUTION	MAX. REGISTRATION CAPACITY
			MAX FLOW	NOMINAL FLOW	TRANSITIONAL FLOW	MIN. FLOW		
			m3/h				m3	
50	W6	50	31.25	25	0.8	0.5	0.001	999999
65	W0	63	50	40	1.015	0.634	0.001	999999
80	W1	63	78.75	63	1.6	1	0.001	999999
100	W2	63	125	100	2.540	1.587	0.001	999999
125	W3	50	200	160	5.12	3.2	0.001	999999
150	W4	63	312.5	250	6.349	3.968	0.01	9999999
200	W5	63	500	400	10.158	6.349	0.01	9999999

Dimensions

METER SIZE DIA (mm)	L LENGHT	B WIDTH	H HEIGHT	CONNECTING FLANGE			WEIGHT (kg)
				D2 (mm) FLANGE DATA	D1 (mm) BOLT CIRCLE DIA	CONNECTION BOLT (PCS-DIA)	
50	200	165	215	165	125	4-M16	13.40
65	200	185	235	185	145	2-M16+2-M14	14.20
80	225	200	240	200	160	8-M16	16.15
100	250	220	245	220	180	8-M16	17.90
125	250	250	260	250	210	8-M16	22.30
150	300	285	310	285	240	8-M20	49.20
200	350	340	385	340	295	8-M20	67.55



M ve N Paz. Arař. Müh. Ltd. Őti
Perpa Ticaret Merkezi B Blok Kat 8 No. 1017
Okmeydanı - İstanbul / TURKEY
Tel: +90 212 320 76 32 / 33 Fax: +90 212 221 76 53
e-mail: info@aquamas.com - www.aquamas.com